

The

Florida Future Farmer

VOLUME XXI

NUMBER 1

Winter, 1960

32nd National Convention

✱

FFA Day Program at
Florida State Fair



National FFA Week
February 20 to 27

FFA Membership By Chapters & Districts

DISTRICT I

	(1)	(2)	(3)	(4)
Allentown	38	42	37	4.30
Baker	80	82	82	8.20
Bethlehem	65	65	59	6.50
Bonifay	57	57	57	5.70
Campbellton	25			
Chipley	41	46	44	4.60
Chumuckla	62	60	60	6.00
Cottondale	50	50	50	5.00
DeFuniak Springs (Walton)	114	84	84	8.40
Escambia Farms	47	48	48	4.80
Gonzalez (Tate)	99	71	69	.50
Graceville	43	43	43	4.30
Greenwood	35			
Jay	69	69	69	
Laurel Hill	58	66	59	6.00
Malone	61	56	53	5.00
Marianna	67	67		
Milton	66	71	10	7.10
Munson	55	61	33	
Paxton	70	42	42	
Ponce DeLeon	52	46		
Poplar Springs	53	53	47	5.30
Vernon	63	69	61	
Walnut Hill	85	57	57	

DISTRICT II

	(1)	(2)	(3)	(4)
Altha	41	44	44	
Blountstown	68	55		
Bristol	56	61	61	
Crawfordville	45	33	6	10.00
Frink	49	34	34	3.40
Grand Ridge	50	36		3.60
Greensboro	44	59		
Greenville	34	21		2.10
Havana	51	48	48	4.80
Jasper	48	39		
Jennings	63	64	63	6.40
Lee	33	33		3.30
Madison	48			
Mayo (Lafayette)	64	69	69	6.90
Monticello	70	44	44	
Pinetta	27	17	17	1.70
Quincy	57	62	62	6.20
Sneads	47			
Sopchoppy	69	51	51	
Tallahassee (Leon)	119	10		
Wewahitchka	51	29	29	
White Springs	36	36	36	3.60

DISTRICT III

	(1)	(2)	(3)	(4)
Alachua (Santa Fe)	122	128	115	12.80
Baldwin	35	35		3.90
Bell	44	50	50	5.00
Branford	45	48	48	4.80
Bronson	42	33	33	
Bunnell	49	50	50	5.00
Callahan	60	52	48	5.00
Chiefland	43	53	53	
Crescent City	66			
Ft. White	38	30	30	
Gainesville	62	49		
Gainesville (Buchholtz)	80	36	36	
Gainesville (Collegiate)	21	21	21	5.00
Green Cove Springs (Clay)	46			
Hastings	60	44	41	4.40
Hawthorne	61	25		2.50
Hilliard	56	56	44	5.00
Lake Butler	51	63	57	5.00
Lake City (Columbia)	105	89	89	
Live Oak (Suwannee)	55	62	62	18.45
Live Oak (Williams)	52	60	59	5.30
Macclenny (Baker Co.)	64	64	64	
Melrose	44	51	51	5.10
Newberry	52	57		5.70
Palatka	65	55		
Starke	38	38		3.80
Starke (Bradford)	43	43		
Trenton	52	61	49	
Williston	71	62		6.20

DISTRICT IV

	(1)	(2)	(3)	(4)
Anthony	60	61		6.00
Apopka	74	47	47	4.80
Bushnell	80	85		3.00
Crystal River	60	28	44	2.80
DeLand	31	35	35	3.50
DeLand Jr.	48	48	48	4.80
Groveland	91	79	79	7.90
Inverness (Citrus)	70	70	65	8.25
Kissimmee	71	72		
Leesburg	48	45	45	4.50
New Smyrna Beach	52	51		
Ocala	52	55	53	5.30
Ocala (Silver Springs)	56	59	1	5.60
Ocoee	43	50	6	5.60
Orlando (Boone)	58	55	55	5.60
Orlando (Colonial)	63	53	52	2.75
Orlando (Edgewater)	46	18	18	1.90
Orlando (Evans)	66	66	66	6.50
Orlando (Oak Ridge)				
Pierson	64	43		4.30
Reddick	66	63	63	5.90
St. Cloud	40	36		3.50
Sanford (Seminole)	100	66	65	6.50
Summerfield (Lake Weir)	49	48	48	5.00
Tavares	74	60	74	7.50
Umatilla	70			
Wildwood	59	64	64	6.40
Winter Garden (Lakeview)	41	49	49	4.80

DISTRICT V

	(1)	(2)	(3)	(4)
Auburndale	40	42	42	4.20
Bartow	121	104	104	
Bradenton	60	69	65	6.00
Bradenton (Southeast)	72	72	72	
Bradenton (Walker Jr.)	61	61	61	6.10
Brandon	102	72	72	
Brooksville (Hernando)	59	59	59	5.90
Dade City	115	73		
Fort Meade	128	117	117	
Frostproof	53	41		4.10
Haines City	33	34		3.00
Kathleen	103	104	104	
Lakeland	82	84	84	8.40
Lake Wales	42	37	22	5.00
Largo	49			
Mulberry	38	50	50	5.00
New Port Richey	63	65	7	6.50
Palmetto	40	40	40	4.00
Parkland	30	18	18	1.80
Pinecrest	65	51	51	5.10
Plant City	73	76	76	7.60
Plant City Jr.	59	40	40	5.00
Sarasota	43	45	44	4.60
Tampa (Chamberlain)	52	36	34	3.60
Tampa (Franklin Jr.)	47	44	43	5.00
Tampa (Hillsborough)	58	50	50	5.00
Turkey Creek	204	145	130	16.90
Wimauma (East Bay)	69	70		4.00
Winter Haven	116	84	84	8.40
Zephyrhills	78	28		

DISTRICT VI

	(1)	(2)	(3)	(4)
Arcadia	53	55	51	5.50
Belle Glade	63	64	44	
Clewiston	69	45	45	
Fort Myers	71	56	50	1.50
Fort Pierce	43	46	46	5.00
Hialeah	35	36	36	4.00
Homestead (South Dade)	54	54	54	5.40
LaBelle	52	35		
Lake Placid	58	26	26	2.60
Miami-Edison	33	33	33	4.00
Miami-Jackson	35	35	35	3.50
Moore Haven	47	45	45	4.50
North Miami	29	32	32	3.20
Okeechobee (Brahman)	70	73	73	8.20
Pahokee	49	54	54	5.40
Pompano	39	40	40	5.00
Sebring	71	55	55	
Stuart (Sailfish)	33	33	33	5.00
Vero Beach	54	30	30	
Wauchula (Hardee)	55	60	60	6.00
Wauchula (Peace River)	60	66	66	6.60

By Way of Editorial Comment:

FFA Closely Allied With Gov.

By RAY E. GREEN
Comptroller, State of Florida

IT HAS been my pleasure and privilege to meet and work with the Future Farmers of America many times during my service as a public official. First, as Clerk of the Circuit Court and since then as State Comptroller. My office and the FFA are closely tied together through the administration of the Sales Tax Law and the Gasoline Refund for farmers. Although I do not always have the opportunity of dealing directly with all of you, we are partners in building a sound and progressive Florida.

We need only to look around us to see the number of former members of your group who are leaders in varied fields today. In addition to your many other interests, I hope some of you will enter the field of Government, at all levels, Local, State and Federal. I am certain you will be able to continue your interest and activity in agriculture and farming and still take an active part in the operation of YOUR government.

Your participation in this program, FFA, is evidence of your interest in building a better Florida and you will be an asset to your group, Community, County, State and Nation. My father owned and operated a livery stable for many years and I know that at times I was tired, discouraged and ready to do most anything else. But I am thankful today for this experience and I am positive you will also be grateful for the opportunities given you through FFA. There is a special satisfaction in hard work, especially with one's hands and the soil, which can be obtained in no other activity.

The high standards of FFA which you will carry through life, guarantee that this nation will never have to be afraid to face any emergency. The Future of America is in the hands of youth. It



Ray E. Green

is comforting to know your fine group will help plan and control the destiny of our country.

The Cover

Randy Kincaid, Florida State FFA President, of the Lake Wales Chapter, presenting Florida oranges to the members of the Traffic Club in Kansas City, Missouri, October 12, during the annual Seaboard Air Line Railroad Forestry Award Winner Program. Pictured left to right are: George A. Falcower, Director of Traffic, Spencer Chemical Co., Kansas City, Mo.; Randy; Fred H. Meyer, General Agent, Alton & Southern Railroad, Kansas City, Mo.; E. Norman Quayle, Ass't. Freight Traffic Manager, Seaboard Railroad, Richmond, Va.; W. S. Lohnas, Ass't. Regional Transportation Manager, Kansas City, Kansas; and Wm. E. Hafner, Commercial Agent, St. Louis and Southwestern Railroad, Kansas City, Mo.

The Florida Future Farmer

Published quarterly by Cody Publications, Inc., Kissimmee, Florida, for the Florida Association, Future Farmers of America. Entered as second class matter Jan. 28, 1954, under Act of March 3, 1879. at the Post Office at Kissimmee, Florida.

STATE OFFICERS, 1959-60

PresidentRandy Kincaid, Lake Wales
1st Vice-President.....Carroll McElroy, Trenton
2nd Vice-President.....Ronald Nelson, Miami
3rd Vice President.....Donnie Simmons, Florala, Ala.
4th Vice-President.....Gene Boyle, Palmetto
5th Vice-President.....Francis Ward, Live Oak
6th Vice-President.....Wilson McCallister, Panacea
Executive Secretary.....A. R. Cox, Tallahassee
State Adviser.....H. E. Wood, Tallahassee

NATIONAL OFFICERS F.F.A. 1959-60

President Jim Thomas, Patterson, Ga.
1st Vice-Pres. Dean Hoffer, Manheim, Pa.
2nd V.-Pres.....L. G. 'Jack' Crews, Cheyenne, Wyo.
3rd V.-Pres. Joe Harold Hughes, Jr. Duncan, S.C.
4th V.-Pres. Richard Poor, Neosho, Mo.
Student Sec'y ..Kenney Earl Gray, Dorsey, Miss.
Exec. Sec'y.....Wm. Paul Gray, Wash. D. C.
Exec. Treasurer.....R. E. Bass, Richmond, Va.
Nat. Adviser....Dr. W. T. Spanton, Wash. D. C.

Mighty MacWire says:

Learn to buy farm fence with care... as a long-term investment rather than a necessary expense. Learn about Mid-States... the Farm Fence that gives years of extra service at no extra cost. Investigate Mid-States Steel Posts, Barbed Wire and other farm products, too.

Now available 1960 Farm Account Book
Send postcard for free copy.



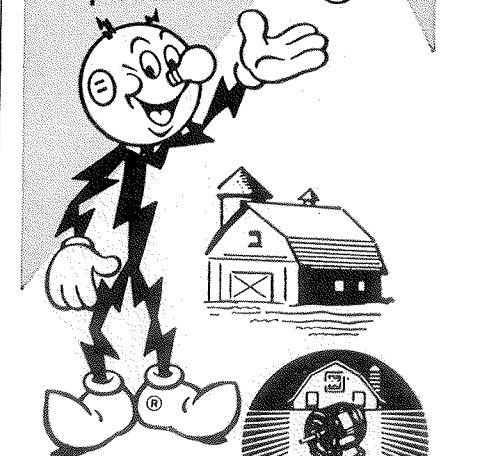
Look for this emblem;
mark of top quality

MID-STATES
Fence

MID-STATES STEEL & WIRE COMPANY
CRAWFORDSVILLE, INDIANA
JACKSONVILLE, FLORIDA

Install YARD LIGHTS

for
convenience
and
profit

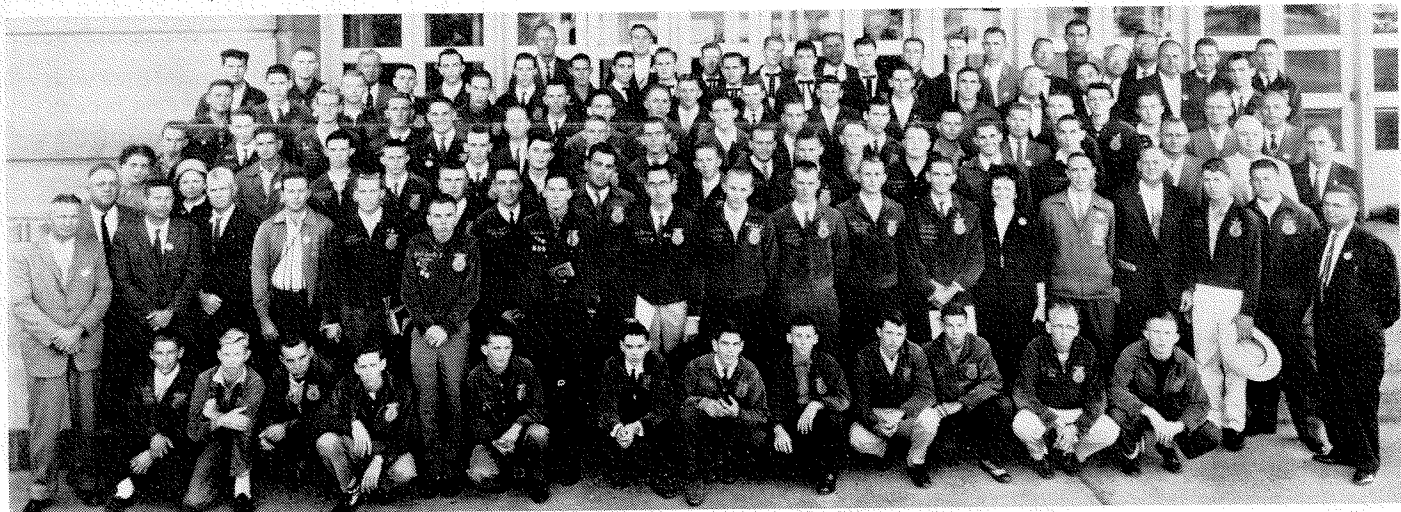


Yard lighting
pays in
convenience,
protection and
extra hours of productive
work. Place fixtures on the
corners of buildings to light
both sides — atop poles to
avoid shadows.

There's NO MATCH for Electric Living

FLORIDA POWER & LIGHT COMPANY

Helping Build Florida



Some of the Florida Delegation at the 32nd Annual National FFA Convention, Kansas City, Missouri.

Florida Delegation at 32nd Annual FFA Convention Numbered Over 150

THE FLORIDA delegation to the 32nd National F.F.A. Convention, held at Kansas City, Missouri, October 12-15, 1959, numbered more than 150. About 60 Chapters were represented, with 21 Chapter Advisers, 4 Principals, one School Board member, two County Coordinators, and several parents and friends.

The official delegates representing Florida were past State President Cecil Tindel of the Graceville Chapter, and State President Randy Kincaid of the Lake Wales Chapter. Cecil was Chairman of the Public Speaking Committee and Randy was a member of the Program of Work Committee.

William and Wesley McNeely of the North Miami Chapter, and Kenneth Powell of the Bartow Chapter were in the National Chorus, and Chuck McIntosh, Turkey Creek Chapter accompanied on the piano. Mellaine Ciyatt of the Lake Butler Chapter, and Roy Lister of the Wewahatchka Chapter were in the National Band.

The Quincy, Mulberry and South Dade Chapters received Gold Emblem ratings in the National Chapter Contest.

Kenneth Tanner of the Callahan Chapter, State winner in the Seaboard Air Line Railroad Forestry Contest, appeared on the Kansas City Traffic Club and the Kansas City Lions Club Programs, which were arranged by R. N. Hoskins, General Forestry Agent of the Seaboard Air Line Railroad Company, Richmond, Virginia. Then Kenneth went with the Forestry winners to Chicago, Pittsburg, Washington and Richmond, where they made several appearances.

Jeff Daughtry of the Peace River Chapter, Wauchula, 1959 Star State Farmer, carried the Florida State Flag in the "Massing of the State Flags"

Ceremony during the presentation of the Star Farmer Awards. The Star American Farmer for 1959 was Lyle Rader, of Tacoma, Washington.

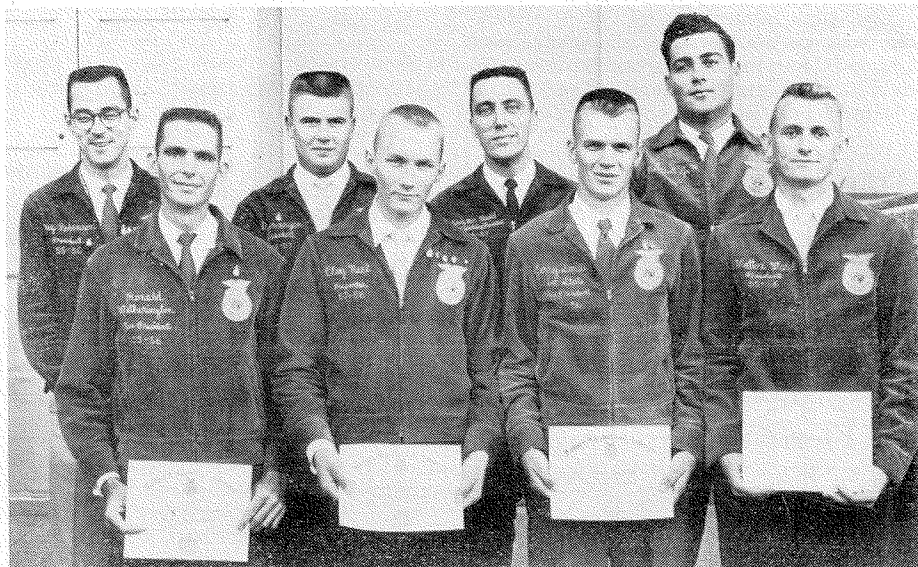
Jeff Daughtry of the Peace River Chapter at Wauchula, and alternates Jerry Glass of the Marianna Chapter, and Francis Ward of the Suwannee Chapter at Live Oak, were recipients of the Chilean Nitrate Leadership Award, and attended the Convention with their expenses paid by the Chilean Nitrate Education Bureau.

The Baldwin Chapter, winner of the Chapter Forestry Contest, sponsored by

the St. Regis Paper Company, was awarded expenses, which were used for some members and Robert E. Jones, Chapter Adviser, to attend.

MacArthur Burnsed, first State FFA Naval Store Forestry winner, with his Adviser, Alan Harvey, Macclenny, attended the Convention with their expenses paid by many Naval Stores firms.

Larry Edwards of the Quincy Chapter, in the State Feeder Steer Award, and his Adviser, James C. McCall, attended the Convention, with their expenses being paid by the Florida Cattlemen's Association.



1959 American Farmers from Florida, reading from left to right: Grey Robinson, Kathleen; Ronald Wetherington, Turkey Creek; Myron Bryan, Alachua; Charles Schack, Greenwood; Terry McDavid, Pompano; Jerry Smith, Poplar Springs; Ed Norfleet, II, Newberry; and Mattox Ward, Jr., Live Oak. Not pictured P. K. Beck, Chiefland.

Don Allen, Director of Instruction, Alachua County, attended, and Ted Pendarvis, Livestock Marketing Specialist, Florida State Marketing Bureau, Jacksonville, also attended, carrying with him several of the State Vice-Presidents and American Farmers.

Receiving the American Farmer Degree Award were: Phillip Kenneth Beck, Chiefland; Myron Bryan, Alachua; Terry Roger McDavid, Pompano Beach; Edward Dudley Norfleet, II, Newberry; Grey H. Robinson, Kathleen; Charles Edward Schack, Greenwood; Jerry Eugene Smith, Poplar Springs; Henry Mattox Ward, Jr., Live Oak; Ronald Robert Wetherington, Turkey Creek.

The Munson State Champion String Band played on a special FFA Talent Show and on the regular National Convention Program. The members of the band were Nicky Walker, Billy Sexton, Steve Crain, James Crain, Olin Crain and Maxium Evers, and their Adviser is C. A. Rice, Jr.

The Vice-Presidents attending were Carroll McElroy, Chiefland; Ronald Nelson, North Miami; Donnie Simmons, Paxton; Gene Boyle, Palmetto; Francis Ward, Suwannee Chapter at Live Oak; and Wilson McCallister, Sopchoppy. They were alternate delegates.

A. R. Cox, Executive FFA Secretary, Tallahassee, received the Honorary American Farmer Degree.

Principals attending were Wm. Ralph Hall, Live Oak; Collis H. Land, Newberry; J. G. Morrow, Kathleen; and C. F. Amaden, Turkey Creek.

Other highlights of the Convention were:

Some of the Florida delegation attended the official Delegates Dinner on Monday; the Swift and Company Breakfast honoring the American Farmers; Sears Luncheon honoring the Foundation winners; the Ford Motor Company Dinner honoring the Vocational Agricultural Teachers on Tuesday; Butler Breakfast honoring the American Farmers, State Star Farmers, and Foundation winners; Air Force Base lunch for several of the American Farmers; General Motors Breakfast in honor of the delegates and Foundation winners Thursday morning; that afternoon, the Band and Chorus members were special guests of the Saddle and Sirolo Club for a special show and dinner. Friday morning, the Judging Teams from Arcadia and Santa Fe at Alachua were the guests of the American Royal Association for breakfast.

For example, here's what some 450 of the farm youths consumed in a little less



Shown above are the 1959-60 National Officers, F.F.A. Left to right: Front Row, L. G. "Jack" Crews, Cheyenne, Wyoming, vice president, Pacific Region; Richard Poor, Anderson, Missouri, vice president, Central Region, and Dean Hoffer, Manheim, Pennsylvania, vice president, North Atlantic Region. Back Row, Jim Thomas, Patterson, Georgia, president; Kenney Earl Gray, Fulton, Mississippi, student secretary, and Joe Hughes, Jr., Duncan, South Carolina, vice president, Southern Region.

than a half hour at the annual FFA breakfast sponsored by General Motors:

33 gallons of milk, 100 dozen eggs (scrambled), 25 gallons of orange juice, 250 pounds of potatoes (hash brown), 125 pounds of ham, 130 pounds of bacon, 120 pounds of sausage, 750 assorted sweet rolls, 200 long loaves of bread sliced and toasted, 35 gallons of coffee, and 50 pounds of butter.

And, just in case anybody got hungry by mid-morning, the hosts shipped in 500 special eating apples, which were piled up in the bed of a GMC pickup truck in the Hotel Muehlebach's Grand Ballroom, for the young guests to take along to their next convention meeting.

Speaker at the breakfast was Dr. R. C. S. Young, educational consultant for General Motors. His topic—"Recognizing the Unique in the Commonplace."

Doctor Young, an immigrant Scot who started working for General Motors as an assembly line production worker, later became a professor of moral philosophy and director of admissions for the Atlanta division of the University of Georgia.

He has been listed by the United States Chamber of Commerce as one of the ten most popular speakers in the U.S.

In his speech to the FFA youth, he

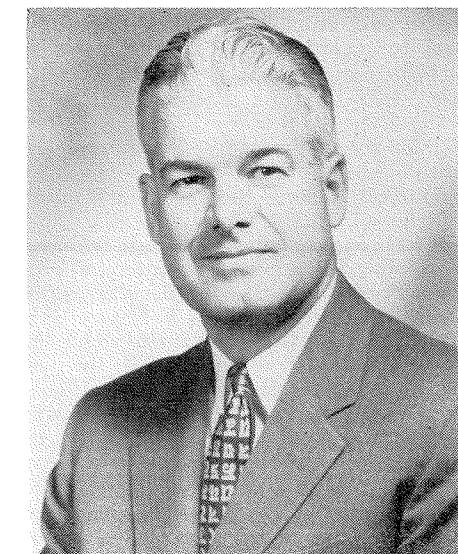
stressed the importance of seeking, and mastering, challenges in routine assignments we encounter throughout life.

Master of Ceremonies was W. L. Vande Water, executive assistant to the general manager of the GMC Truck and Coach division, Pontiac, Michigan.

DeYoung Named Chairman FFA Sponsoring Committee

RUSSELL DEYOUNG of Akron, Ohio, President of the Goodyear Tire & Rubber Company, has been elected to serve during 1960 as Chairman of the Sponsoring Committee for the Future Farmers of America Foundation, Inc.

The FFA Foundation is the organization
(Continued on page 6)



National FFA Week, Feb. 20 to Feb. 27, 1960

"You'll Need Farmers in YOUR Future" will be the general theme for National FFA Week, February 20-27, 1960, as observed by the 155 Chapters and 8500 members in Florida. Kits of material will be available from the Future Farmer Supply Service, Alexandria, Virginia, after the chapters receive the samples.

Randy Kincaid, Lake Wales FFA Chapter, State President, will be presented a Proclamation for Future Farmer Week by Governor LeRoy Collins.

FFA members should plan what will be done in their community to observe Future Farmer Week.



Officers of Brandon FFA Chapter who were guests of First National Bank of Tampa at a Steak Luncheon. Left to right: Charles Noble, Reporter; Carter Bryant, Treasurer, Ronald Padgett, President; Larry Brady, Vice President; Bill Bennett, Secretary; O. K. Alexander, Sentinel. Also, Nat Storms, Adviser; Oscar Lastinger, Adviser; D. A. Storms, County Coordinator; and Robert Morris, Agriculture Representative, First National Bank of Tampa.

Awards Offered to FFA at State Fair

THE FFA members and Chapters will be showing their beef and dairy cattle in the Florida State Fair at Tampa. The Florida State Fair offers awards: Blue \$10.00, Red \$7.50, White \$5.00.

All dairy entries are expected to be in the barn by midnight Monday, February 1, 1960, as judging will begin at 9:00 a.m. Tuesday, February 2. The Guernsey and Jersey breeders in Florida will present a special Trophy to the exhibitors of the Champion male and female in their respective breeds. The dairy cattle will be released at 6:00 p.m. Saturday, February 6th and must clear the fair grounds not later than 8:00 a.m. Sunday, February 7th.

Tuesday, February 2nd, the Greater Tampa Chamber of Commerce will be host to all 4-H and FFA dairy exhibitors in the Little Auditorium at noon.

Florida Dairy, Inc., is sponsoring a Fitting Contest with awards of \$15.00 distributed on a \$5, \$4, \$3, \$2, and \$1 basis to the top five (5) animals.

The Florida Dairy Products Association, Inc. Rotating Trophy will be awarded to the Future Farmer member making the best record in the Dairy Show at the Florida State Fair.

During the second week, the beef cattle will be on exhibit. The beef cattle must not be brought to the State Fair Grounds until after 12:00 noon on Sunday, February 7th, and must be in place not later than midnight, Sunday, February 7th. Award Plaques will be presented by the State Breeders' Association as in the past to the FFA member showing the Champion male and female of the following breeds: Aberdeen-Angus, Brahman, Hereford, and Shorthorns. Judging will begin at 9:00 a.m. February 8.

These animals will be released after 8:00 p.m. Saturday, February 13th and

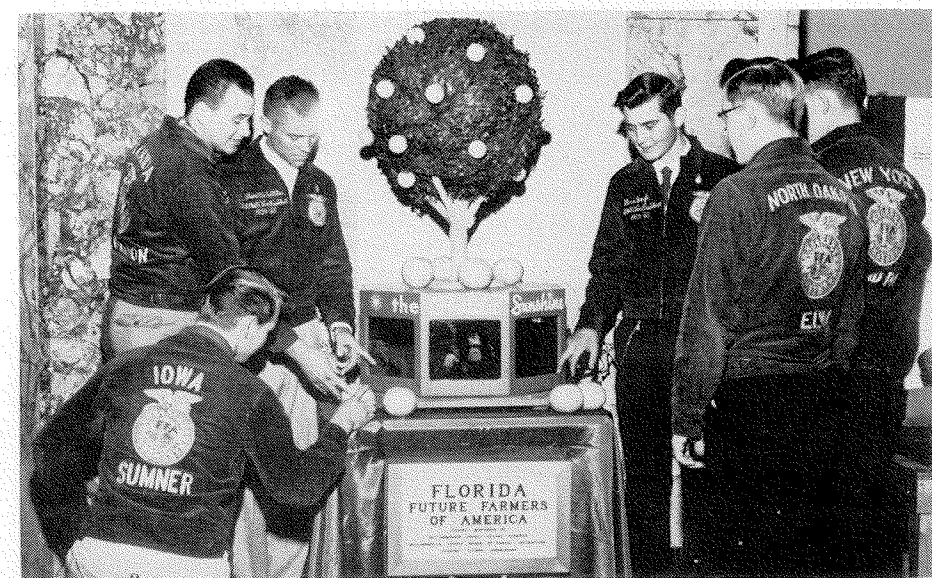
must clear the fair grounds not later than 8:00 a.m. Sunday, February 14.

The Hillsborough County Cattlemen's Association will present a trophy to the outstanding FFA herdsman during Beef Cattle Week.

The Florida Cattleman magazine will present a trophy to the top FFA Showman during Beef Cattle Week.

Also, many Future Farmers are preparing their fat cattle to show in the third Florida State Fair Fat Cattle Show.

The Florida Power Corporation presents a permanent trophy for the best barrow exhibited by a 4-H or FFA member, determined in carcass competition.



Florida Exhibit at the National FFA Convention, thanks to Florida Citrus Commission, Hillsborough County Future Farmers and Board of Public Instruction, and D. A. Storms, County Coordinator. The artificial citrus tree is loaded with oranges which light up, and a revolving picture display of Florida scenery.

The Florida State Poultrymen's Association will award a trophy to the exhibitor with the best exhibit in the FFA Division, Youth Poultry Show. An FFA Poultry Judging Contest will be held with team awards of \$75.00 in cash.

In the Youth Rabbit Show a rotating trophy will be presented by the Department of Agriculture of Florida.

Future Farmer members will be competing for premiums and awards in the Fat Stock Show and Gain-in-weight Contest sponsored by Florida Retail Federation.

The team with the highest combined score in judging poultry and eggs will represent Florida at the National Judging Contest in October, during the National FFA Convention, through the sponsorship of the State Department of Agriculture.

DeYoung

(Continued from page 5)

tion which provides funds for award programs to stimulate higher achievement among vocational agriculture students throughout the nation. Some \$180,000 is spent for this purpose each year. Mr. DeYoung's principal responsibility as Chairman of the Sponsoring Committee will be to contact potential fund donors during the coming year.

He succeeds Merritt D. Hill, Birmingham, Michigan, vice president of Ford Motor Company and general manager of Ford's Tractor and Implement Division.

Currently, more than 300 business and industrial companies, organizations, and individuals make annual contributions to support the FFA Foundation program. DeYoung's election took place during a dinner meeting of the donors, held in conjunction with the 32nd annual national convention of Future Farmers of America at Kansas City, Missouri.

Many Florida FFA Winners In Various Shows

THE KATHLEEN FFA Dairy Judging Team, composed of Tommy Thompson, Jimmy Thompson, Charles Young and Tommy Cave, and Adviser Walter W. Massey, represented Florida at the National Dairy Judging Congress at Waterloo, Iowa, October 5 and 6.

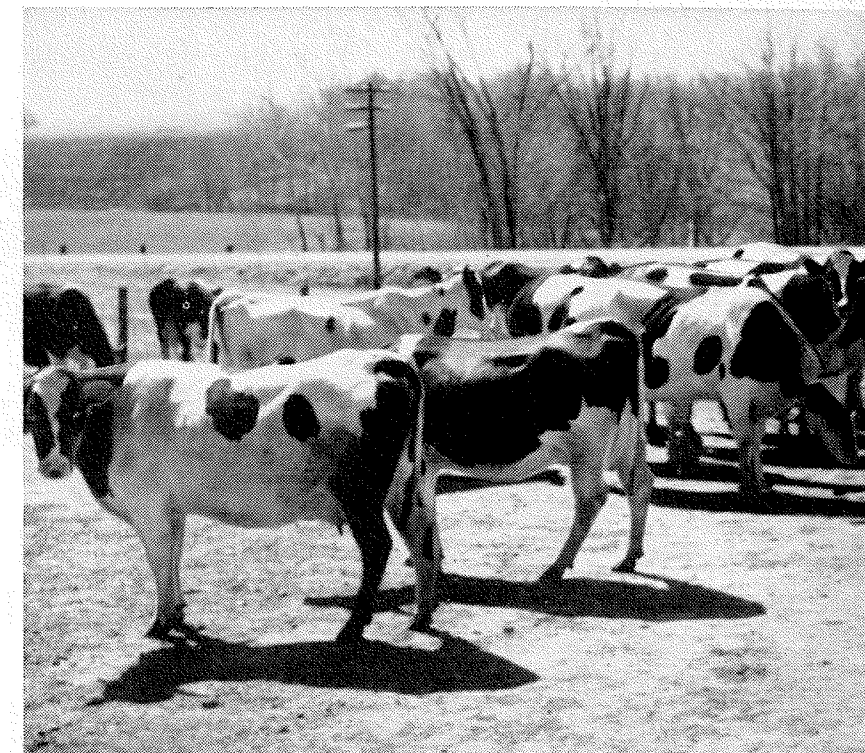
In "Dairy Products," the team received Honorable Mention. Individual placings were: Tommy Thompson received a Bronze Emblem; Tommy Cave and Charles Young received Participation Certificates.

In "Dairy Cattle," the team won a Bronze Plaque. Individual placings: Tommy Thompson, Gold Emblem; Tommy Cave and Charles Young received Honorable Mention. Jimmy Thompson, Silver Emblem for Showmanship.

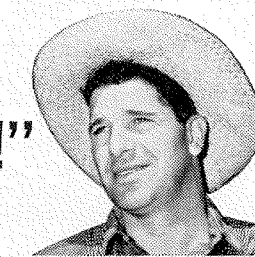
The Marianna FFA Meats Identification Judging Team, composed of Willis Coulliette, Joe Padgett, Royace Hasty and Jerry Glass as alternate, with their Adviser Rex F. Toole, received participation certificates, with Willis receiving Honorable Mention Certificate.

The Arcadia Poultry Judging Team, composed of Jimmy Harrison, John Hay and Neill Tyree, with their Adviser W. S. Fletcher, received participation certificates, with John receiving a Bronze Emblem, in the National Poultry Judging Contest.

The Santa Fe Livestock Judging Team from Alachua, composed of Dean Nettles, Tommy Crevasse, Jim Busby and James Alligood, with their Adviser Henry Lunsford, represented Florida in the National Livestock Judging Contest in Kansas City, Missouri. The team and members all received a Bronze Plaque and emblems, with Dean receiving a silver emblem, and James receiving a bronze emblem in individual placings. In Livestock Showmanship, Tommy received a silver emblem.



"I cut cow-cleaning time 4 hours a week by paving my barnyard with concrete!"



Especially during the wet season, dairymen save time with concrete barnyards. "Grade A" producers find that meeting strict sanitary requirements is far less work.

A concrete yard is a sanitary yard. Easy to keep clean. And the wetter the weather, the cleaner the yard.

Germs of infectious diseases like mastitis and foot rot have no mud in which to collect and breed. Cows stay healthy. Production stays high. Extra profits pay for the pavement over and over again.

You'll find concrete's cost surprisingly low. Contact your local ready-mixed concrete producer for prices. Literature on concrete in and around the dairy barn is yours for the asking.

PORTLAND CEMENT ASSOCIATION

1612 East Colonial Drive,
Orlando, Florida

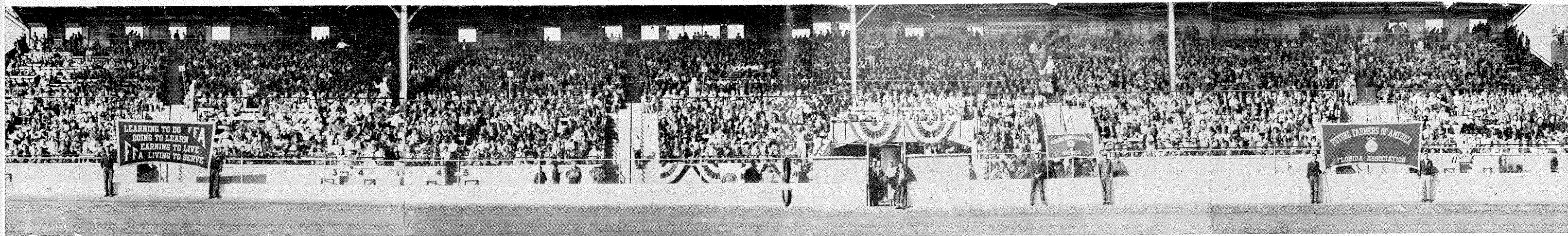
THE MARK OF A
MODERN FARM
concrete

A national organization to improve and extend the uses of concrete



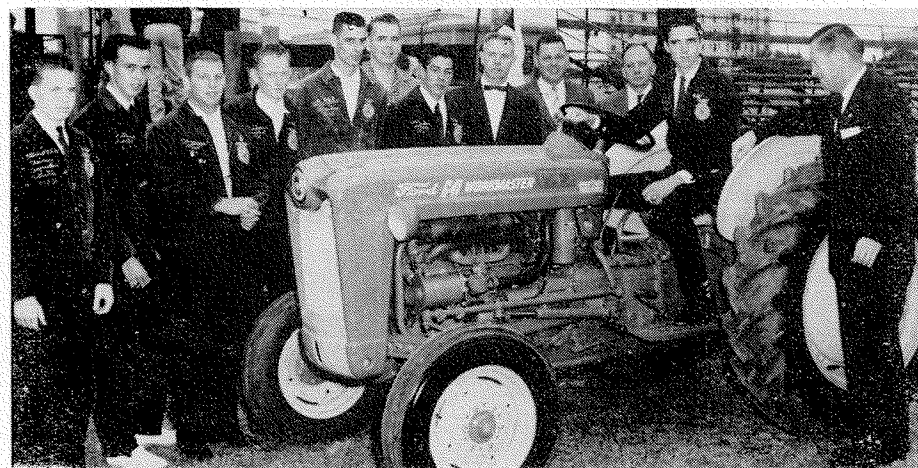
Florida Future Farmer

7



Above are shown a portion of the thousands of young FFA and FHA members who attended FFA Day at the 1959 Florida State Fair in Tampa where they saw several outstanding men receive the Honorary State Farmer Degree.

FINAL PLANS ARE ANNOUNCED FOR ANNUAL FFA DAY PROGRAM, FEBRUARY 6, 1960, AT THE FLORIDA STATE FAIR IN TAMPA



T. E. Hancock, Ass't. General Sales Manager, Florida Ford Tractor Company, Jacksonville, and members of the Citrus FFA Chapter at Inverness, State winners of the Mechanizing Florida Agriculture Awards at the FFA Day Program at the 1959 Florida State Fair. Left to right: Marshall White, Treasurer; Bill Shellhorn, Reporter; Richard Whitton, Sentinel; Rudolph Barrett, Vice-President; Wayne Parmer, Chaplain Conductor; Dick Kaufman, Citrus County School Board Member; Leon Goodwin, Secretary; Delmar Montgomery, Supervising Principal, Inverness Schools; Henry Hewitt, Advisor; Harry Buie, Citrus County Superintendent; Charles Jones, President; and Hancock.

UPON ENTERING the State Fair Grounds, everyone will go directly to the Grandstand for registration and the special FFA Day Program. As soon as the program is over, everyone will clear the Grandstand except members of the Judging Teams.

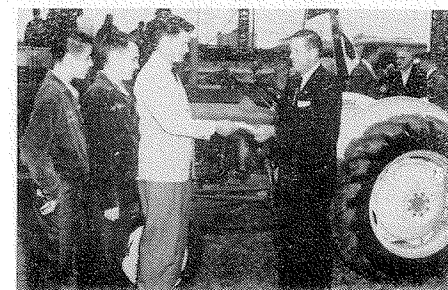
Group leaders will be labeled and stationed at intervals in front of the Grandstand, and members of the Dairy Judging Teams will be told when to move out to their respective groups, which will go directly to the Mayo Livestock Pavilion. Then group leaders for other judging contests (beef cattle, and hogs) will be stationed in front of the Grandstand and members of the Judging Teams will be told when to move out to their respective groups.

General information for Judging Teams: for each Chapter, three boys will compose a team in livestock judging. Substitutions are permissible for beef cattle and hogs, but there will be no substitutions in any of the contests after judging begins. The substitute must report to the group leader and turn in his membership card until the contest ends.

Each group will be given a total of ten minutes for general inspection and official placing of each of the four entries in each class. Explicit instruction will be given group leaders in Tampa before the judging begins. These instructions will be followed by all contestants.

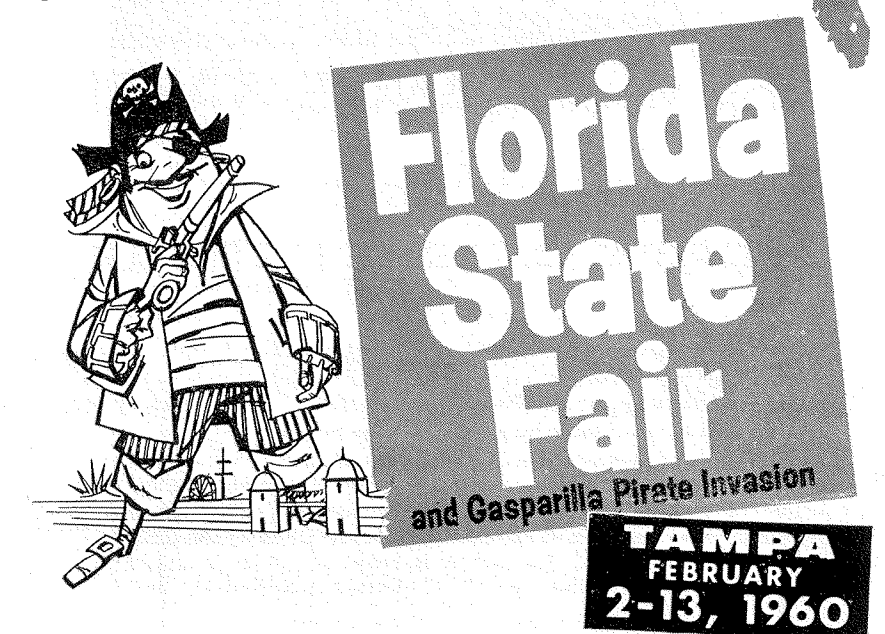


Thomas D. Bailey, State Superintendent of Public Instruction, addressing Future Farmers and guests during FFA day ceremonies at the Florida State Fair.



Receiving a \$300 certificate as second place winner in the Mechanizing Florida Agriculture Awards from T. E. Hancock, Ass't. General Sales Manager, Florida Ford Tractor Company, Jacksonville are: Jimmy Cook, Advisor, Nicky Walker, and Billy Sexton of the Munson FFA Chapter, at the 1959 Florida State Fair.

Great Show Window of the Sunshine State



Plan several visits to the Fair!

See hundreds of ingeniously designed displays of Florida's fresh fruits, vegetables and flowers, minerals and forest products, honey, tobacco and seafoods. Visit the International Orchid Show, National Hibiscus Show, Art and Crafts exhibit and the Florida Electrical Exposition.

Attend cattle shows and sales; swine, poultry and rabbit shows—plus special 4-H and FFA youth activities.

Watch action-packed auto races, thrill shows and outstanding grandstand entertainment. Have fun on the gaint midway. Enjoy all four big parades in comfort from the grandstand. See the Fair often—See it all!

SPECIAL EVENTS FOR FUTURE FARMERS

- Feb. 2—9:00 A.M. Youth Dairy Cattle Show judging. 10:00 A.M. Youth Egg Show judging.
- Feb. 3—10:00 A.M. Poultry judging—Youth Show.
- Feb. 4—10:00 A.M. Youth Rabbit judging. 2:00 P.M. Fat Stock judging.
- Feb. 5—7:00 P.M. FFA Poultry Team judging.
- Feb. 6—9:00 A.M. FFA Team judging—Dairy, Beef and Swine. FFA Grandstand program and achievement awards.
- Feb. 8—9:00 A.M. Youth Beef Cattle judging.

See it often! See it all!

F.F.A. DAY PROGRAM—FLORIDA STATE FAIR—TAMPA—FEBRUARY 6, 1960

General Program Chairman—H. E. Wood, State Supervisor of Agricultural Education

Master of Ceremonies—Randy Kincaid, State President of Florida Association, F.F.A.

8:00— a.m.—Admission to State Fair Grounds & Assemble in Grandstand	9:35— 9:50 a.m.—Awarding Ribbons to Grand Champion Winners in F.F.A. Livestock Show—Honorable Nathan Mayo, Commissioner of Agriculture, State of Florida
8:00— 8:45 a.m.—Registration	Presentation "Mechanizing Florida Agriculture Awards" by G. H. W. Schmidt, Vice-President, Florida Ford Tractor Company, Jacksonville
8:45— a.m.—Organizing Dairy Cattle Judging Teams	9:50— 9:55 a.m.—Harmonica—Harry Samol, Hialeah
8:45— 9:00 a.m.—Turkey Creek F.F.A. String Band	9:55—10:05 a.m.—State FFA Sweetheart—Miss Carol Long, Edgewater, Orlando
9:00— 9:05 a.m.—Invocation and Salute to the Flag	10:05—10:20 a.m.—Organizing Beef and Swine Judging Teams
9:05— 9:10 a.m.—Welcome Address—Carl D. Brorein, President of Florida State Fair Association	10:20—12:00 p.m.—Judging Contests
9:10— 9:15 a.m.—Introduction of Guests, H. E. Wood, State Adviser, F.F.A., and Ronald Nelson, State Vice-President	1:00— 6:00 p.m.—Attending Auto Races; visiting Agricultural and Commercial Exhibits
9:15— 9:20 a.m.—Greetings—Honorable Thomas D. Bailey, State Superintendent of Public Instruction	
9:20— 9:25 a.m.—Remarks by Cabinet Officials	
9:25— 9:35 a.m.—Presentation of Honorary State Farmer Degree by State Officers of	

WE ARE INTERESTED IN Your LIVESTOCK PROBLEMS

★ Whether Improvement of Your HERD or Pasture!

THE FIRST NATIONAL BANK of Leesburg, Florida



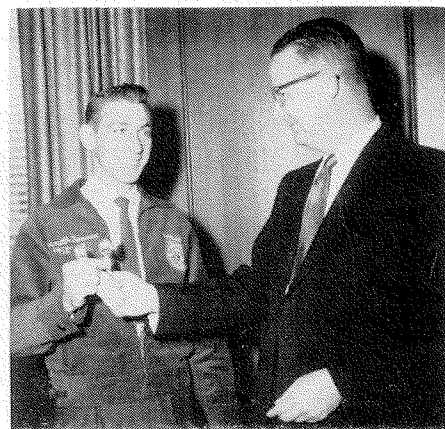
Delegation who called on Deputy Mayor John Duba when State FFA forestry winners were in Chicago (left to right) G. T. F. Schreiber, General Western Agent, Seaboard Air Line Railroad, Boyd McLocklin, Edward Coble, John Gilman, Mr. Duba, John P. Derham, Jr., Vice President, Seaboard Air Line Railroad, Harold Howard, Crawford Welch, Robert N. Hoskins, General Forestry Agent, Seaboard Air Line Railroad, Kenneth Tanner and T. B. Holland, Vocational Agriculture Teacher from Apex, N. C.

FFA Forestry Winners Honored

Six OUTSTANDING young Future Farmers from the Southeast—winners of the cooperative FFA forestry program sponsored by the Seaboard Air Line Railroad Company—were honored during the week of October 12. These six boys appeared as guest speakers before the Kansas City Traffic Club on October 12, the Host Lions Club of Kansas City on October 13, a group of prominent business and industrial leaders of Chicago on October 14, and the Kiwanis Club in Pittsburgh on October 15. On October 16 they addressed the Inter-Club Council in Richmond at their monthly luncheon meeting.

Co-hosting the Pittsburgh Kiwanis luncheon was the Koppers Company, and serving as co-hosts at the Richmond meeting were Miller Manufacturing Company and the David M. Lea Company.

The six State FFA forestry winners were welcomed to Chicago by the Honorable John Duba, Deputy Mayor, and to Pittsburgh by the Honorable Thomas Gallagher, Mayor of Pittsburgh. They had a conference with Governor J. Lind-



Kenneth Tanner shown presenting grapefruit spoons to Douglas Grymes, Vice President, Koppers Company, Pittsburgh, Pa.

FOR YOUR LAND'S SAKE! USE... FLORIDA FAVORITE FERTILIZER

If you've wondered why so many Florida growers, ranchers and farmers continue to use Florida Favorite Fertilizer, the answer is simple—it's because F.F.F. Brand continues to enrich soil... so successfully that year-in, year-out profitable harvests just come naturally!

For the sake of your soil—for enriched nourishment that reaps profitable rewards for you—insist on the economical fertilizer specifically geared to meet Florida soil needs—FLORIDA FAVORITE FERTILIZER!

COMPLETE FIELD SERVICE

- CITRUS GROVES
- FIELD CROPS
- PASTURE GRASS
- TRUCK FARMS

florida favorite fertilizer

INCORPORATED
Ph. MUtual 2-2153, P. O. Box 912, Lakeland, Fla.



Write for full information

W. E. Harris, Teacher of Vocational Agriculture in Apopka, was killed in an automobile accident near Brooksville on Saturday, November 21, 1959. He had taught Vocational Agriculture in Alabama for 7 years before coming to Florida 3 years ago. He is survived by his wife and two children. Expressions of sympathy have been extended to Mrs. Harris from the F.V.A.T.A. and the F.F.A.

say Almond in Richmond before departing for their homes.

These young men ranging in age from 17 to 19 are: John D. Gilman, Ashland, Va., Harold Howard, Morrisville, N. C., Edward Coble, Simpsonville, S. C., Boyd McLocklin, Statham, Ga., Kenneth Tanner, Callahan, Fla., and Crawford Welch, Grove Hill, Ala. Accompanying them were T. B. Holland, Vocational Agriculture Teacher, Apex, N. C., and Robert N. Hoskins, General Forestry Agent, Seaboard Air Line Railroad.

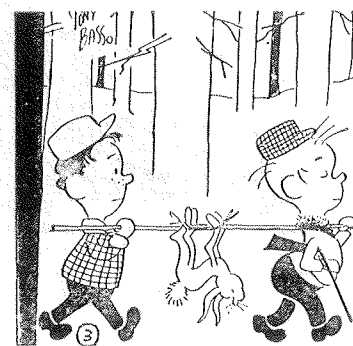
The Advisor of State Winner from Florida will accompany them in 1960.

Florida Winners Attend Jr. Vegetable Growers Meet

FLORIDA FRUIT and Vegetable Association FFA winners participated in the 25th Anniversary Convention of the National Junior Vegetable Growers Association in Washington, D.C., December 6-10. The Hastings Team composed of Rex Knorr, Mike Thigpen and Billy Beach, and Adviser, J. C. Dennis, winners in the Judging Contest, and the Turkey Creek Team composed of Jack James, Lester Patrick, Edward Webb, Malcolm Streetman, and their Adviser, John St. Martin, Jr., winners in the Demonstration Contest.

The State Vegetable Production winner, Russell Barnes of the Turkey Creek Chapter accompanied the others in attending the Convention. They were sponsored by the Florida Fruit and Vegetable Association.

Besides participating in National events, they were taken on a tour of Washington and the surrounding areas which included Arlington National Cemetery, Lincoln and Jefferson Memorials, White House, Washington's home at Mt. Vernon, U. S. Naval Academy at Annapolis, and the U.S.D.A Research Center in Beltsville, Md.



Florida Future Farmer

CALIFORNIA'S

welcome to the world



SANTA MONICA'S

Miramar
and NEW TOWER

California's World Famous Resort overlooking the Blue Pacific where Wilshire meets the sea. Twenty minutes from International Airport. 450 luxurious rooms and bungalows, all with television and radio. Complete convention facilities. Banquet rooms for up to 2,000, air-conditioned. Exciting new Venetian Room and Cantonese Room. Swimming pool... Beautiful grounds and landscaped gardens. Rates from \$8. Write William W. Donnelly, Gen. Mgr.

Across the U.S.A. and in HAWAII

MASSAGLIA
CREST OF GOOD LIVING



JOSEPH MASSAGLIA, JR., President

Santa Monica, Calif. Hotel MIRAMAR	New York City Hotel NEW YORKER
San Jose, Calif. Hotel SAINTE CLAIRE	Washington, D. C. Hotel RALEIGH
Long Beach, Calif. Hotel WILTON	Hartford, Conn. Hotel BOND
Gallup, N. M. Hotel EL RANCHO	Pittsburgh, Pa. Hotel SHERWYN
Albuquerque, N. M. Hotel FRANCISCAN	Cincinnati, O. Hotel SINTON
Honolulu Hotel WAIKIKI BILTMORE	Denver, Col. Hotel PARK LANE

CHICAGO MIDWEST HEADQUARTERS
BOOKING OFFICE 200 E. WALTON DE 7-6344

World famed hotels—Teletype service—Television

The Officers and Advisors
Florida Association Future Farmers of America
Tallahassee, Florida

Tallahassee, Florida
September 30, 1959

Pursuant to your request I have examined the cash records of the Florida Association Future Farmers of America and present my report as follows:

EXHIBIT A—Balance sheet at June 30, 1959.
EXHIBIT B—Statement of Cash Receipts and Disbursements for the Period July 1, 1958 through June 30, 1959.

All recorded cash receipts were traced through the bank by means of original deposit slips and bank transcripts, and all cancelled checks were inspected for regularity.

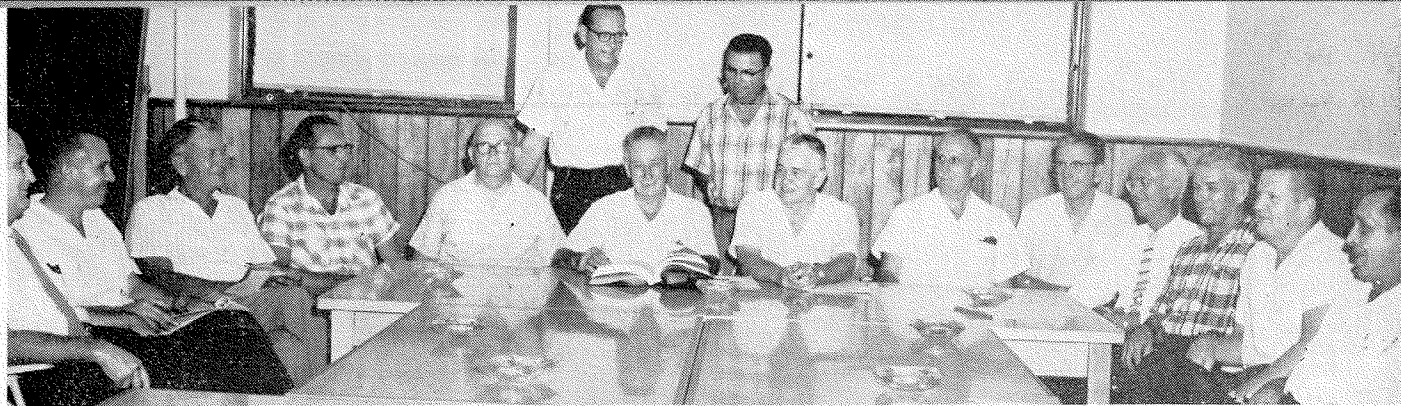
The bank account in the Capital City National Bank was satisfactorily reconciled with statements furnished by the depository. Bank accounts with Leon Federal and Tallahassee Federal Savings and Loan Associations were verified from bank books.

United States Savings Bonds were not inspected by me at June 30, 1959 but are shown as part of this report.

Accounts receivable are the result of expenditures made for these funds from the Surplus Account. Surplus will be reimbursed upon receipt of the pledged funds.

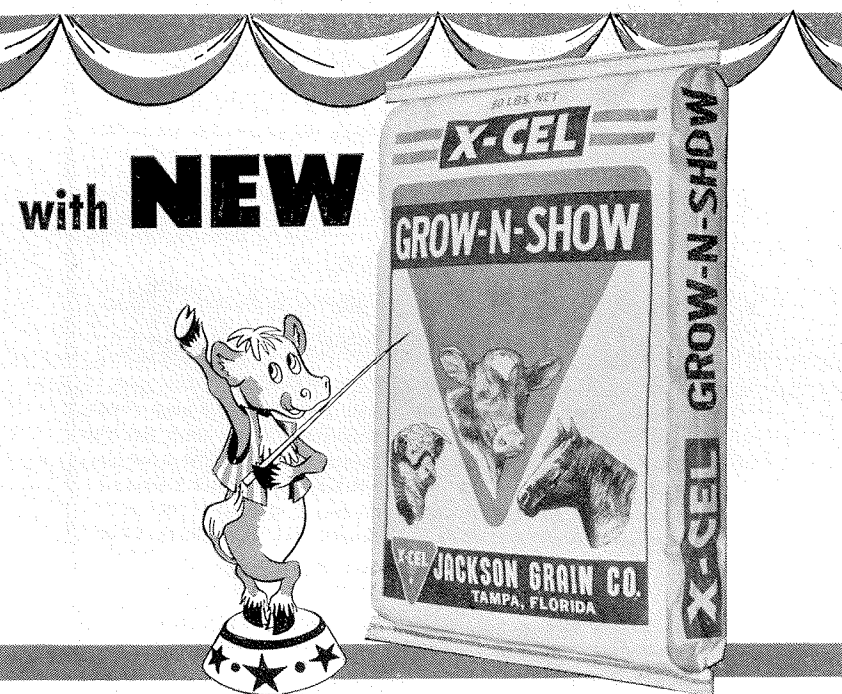
Subject to the foregoing comments, it is my opinion that the attached Balance Sheet presents fairly the financial position of the Florida Association Future Farmers of America at June 30, 1959 and the result of its operation for the year then ended.

S/Abner Avirett, Jr., Certified Public Accountant



Kenneth McMullen, District Agent, Agricultural Extension Service; Joe Busby, Ass't Director, Agricultural Extension Service; F. L. Northrop and C. M. Lawrence, Area Supervisors, Agricultural Education, State Department of Education; E. W. Garriss, Head Teacher-Trainer, Agricultural Education, University of Florida; Woodrow Brown, State Boy's 4-H Club Agent; H. E. Wood, State Supervisor for Vocational Agriculture, State Department of Education; G. C. Norman, Program Specialist, Agricultural Education, State Department of Education; M. O. Watkins, Director, Agricultural Extension Service; W. T. Loftin, Associate Professor, Agricultural Education, University of Florida; T. L. Barrineau, Area Supervisor, Agricultural Education, State Department of Education; Franklin Perry and W. J. Platt, District Agents, Agricultural Extension Service; Forrest E. Myers, Ass't. to the Director, Agricultural Extension Service; and A. R. Cox, State FFA Executive Secretary.

Raise MORE PROFITABLE calves!



GROW-N-SHOW

is a new X-CEL product developed by Jackson Grain and Carnation-Albers Research Farms to make farming in Florida more profitable for you.

It combines high quality grains and minerals with 25 per cent world-famous Calf Manna, and eliminates the need for feeding a calf-developing ration plus Calf Manna after weaning.

X-CEL GROW-N-SHOW is a superior two-feeds-in-one ration that contains all of the essential nutrients needed by Florida calves for thrifty, sturdy growth. It is also an excellent ration for horses, and a fine supplement for conditioning and finishing show animals.

Get the GROW-N-SHOW story today! See your friendly X-Cel feed man. He'll show you how X-CEL GROW-N-SHOW can save you time and labor—help you raise more profitable animals!

— Our 50th Year Of Progress —



Florida Sets Pace For Cooperation

By HERVEY SHARPE
Assistant Editor,
Florida Agricultural Service

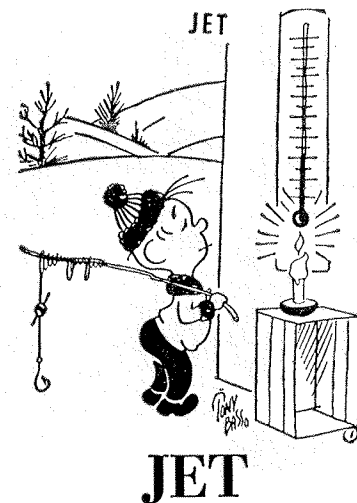
TWO-WAY communication paves the way for amicable relations between FFA and 4-H in Florida. The two sponsoring agencies—Vocational Agriculture and Agricultural Extension Service—find that frank face-to-face discussions eliminate problems before misunderstandings set in.

In the Sunshine State good working relations between Agricultural Extension and Smith-Hughes agriculture isn't of recent vintage—the agencies have been good neighbors for years.

During one of the many friendly chats, Harry Wood, state supervisor of Vocational Agriculture, and Dr. M. O. Watkins, director of the Agricultural Extension Service, agreed to scheduling a conference table discussion. The meeting met with such success that it will become an annual event. In between there'll still be the usual friendly communiques—written, 'phone and face-to-face.

At the first annual administrative session both agencies lent cooperative ears. Discussions paved the way for better mutual agreements. Policy changes were blueprinted that will insure smooth operation of both youth programs. It was agreed that the Golden Rule will serve as a guide in mapping out the youth programs. And just as important, they'll keep the interest of the boys' at heart before taking any action.

Project work was one of the conference topics. It was agreed that any boy, 4-H or FFA, who enrolled after September 1 in a project running more than one year, would be expected to continue this project in the organization until August 31 of the following year. Further, it was suggested that any boy who transferred a project from one organization to the other at the end of the year should inform his teacher or agent of the change. It then is the responsibility of the teacher or the agent concerned to inform (Continued on page 14)



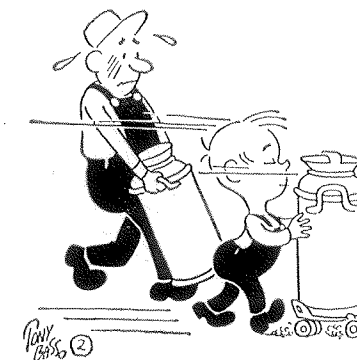
A little over five years ago, on a warm, rainy night, yes, in Florida, a son was born to the Plane family of Homestead.

Homestead is a farming community, also the site of a big S.A.C. air base. The Plane farm adjoins the base, naturally making them air conscious. So with the name and the place being what they are it was inevitable they name him Jet. With a name like Jet, they reasoned, almost logically, he should go far fast, noisily perhaps, but fast.

The big planes taking off and landing almost continuously made considerable noise and conversation difficult. As Jet didn't like difficulties he just never tried to talk, besides what can one say to a cow or chicken, that hasn't been said before, and better, by some one with a talent for language.

Jet enjoys living on the farm, playing with the animals, and exploring the fascinating buildings. He also helps his father with some of the chores. He's not much help so far but he's getting there. He also likes to help his mother gather the eggs. He heard her remark once that there was no money in eggs. After breaking a number and examining the contents, he agreed she was right. He likes living close to the land. Sometimes it's difficult to tell where the land ends and Jet begins, but a little soap and water takes care of that. He would like a brother or sister, not to talk to, but he's never really lonesome. There is so much to do, so many places to play and hide in, the chores that have to be done, the days are hardly long enough.

As you see Jet is a typical normal, farm boy, good material for the F.F.A. I'm sure he'll become a member some day.



RESEARCH

FIELD TESTING

GROWER SERVICE

tried and true...

For more than 65 years, W&T's continuing program of research, field testing and grower service has kept science's newest, proven advances working efficiently for Florida growers through *Ideal* Fertilizers and *FASCO* Pesticides. It is gratifying that results throughout the years have earned the title of "the best" for these fertilizers and pesticides.

FLORIDA AGRICULTURAL SUPPLY COMPANY

WILSON & TOOMER
FERTILIZER COMPANY
Plants in Jacksonville, Tampa, Cottondale, Port Everglades
GENERAL OFFICES • JACKSONVILLE, FLORIDA



PAST, PRESENT AND FUTURE

Our long and successful years of working with and supplying Florida growers the finest agricultural chemicals available, is your assurance that we will be at your service when you take your place in Florida's ever expanding field of agriculture.

COPPER FUNGICIDES—NUTRITIONAL PRODUCTS—MINERAL ELEMENTS

Ask Your Dealer For Agricultural Chemicals Bearing The TC Trademark.



TENNESSEE CORPORATION

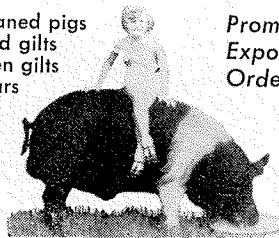
617-29 Grant Building, Atlanta, Georgia

Hampshires

Breeding stock of all ages available

- weaned pigs
- bred gilts
- open gilts
- boars

Prompt
Export
Orders



CIRCLE D RANCH

Rt. 2, Box 1000, Marianna, Fla.
Phone Cottondale 2461

Statement of Ownership

Statement required by the Act of August 24, 1912, as amended by Acts of March 3, 1933, and July 2, 1946 (Title 39, United States Code, Section 233) showing the ownership, management, and circulation of The Florida Future Farmer, published quarterly at Kissimmee, Florida for October 1, 1959.

1. The names and addresses of the publisher, editor, managing editor, and business managers are: Publisher Cody Publications, Inc., Al Cody, pres., Box 891, Kissimmee, Fla.; Editor A. A. Cox, State Dept. of Education, Tallahassee, Florida; Managing Editor George Y. Bast, Jr., Box 891, Kissimmee, Florida; Business manager Al Cody, Box 891, Kissimmee, Florida.

2. The owner is: Florida Association, Future Farmers of America, Tallahassee, Florida; Randy Kincaid, president, Lake Wales, Florida; Carroll McElroy, 1st vice president, Trenton, Florida; A. R. Cox, executive secretary, State Dept. of Education, Tallahassee, Fla.

3. The known bondholders, mortgagees, and other security holders owning or holding 1 percent or more of total amount of bonds, mortgages, or other securities are: (if there are none, so state) None.

4. Paragraphs 2 and 3 include, in cases where the stockholder or security holder appears upon the books of the company as trustee or in any other fiduciary relation, the name of the person or corporation for whom such trustee is acting; also the statements in the two paragraphs show the affiant's full knowledge and belief as to the circumstances and conditions under which stockholders and security holders who do not appear upon the books of the company as trustees, hold stock and securities in a capacity other than that of a bona fide owner.

Sworn to and subscribed before me this 1st day of October, 1959.

DELLA ENGLE

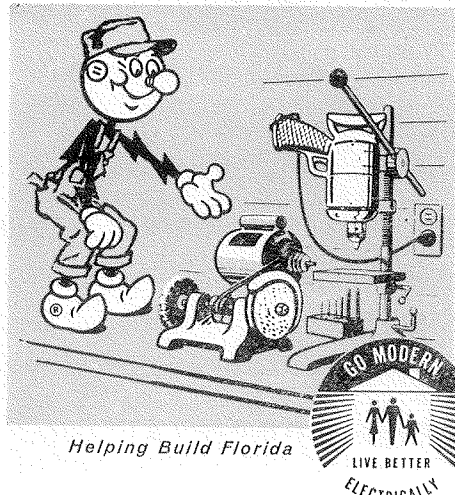
(SEAL) My commission expires December 19, 1962

AN ELECTRIC TOOL SHOP

**speeds up repairs
saves delays
and money**

Basic power tools such as a grinder, drill and saw are practical for so many jobs. And make sure you have plenty of good lighting for safety. Electricity costs so little and does so much.

FLORIDA POWER & LIGHT CO.



Helping Build Florida



Top photograph shows the Munson FFA String Band at the National Convention in Kansas City. • Bottom photograph was taken at the time of the presentation of a pickup truck to the FFA Chapter of Apopka Memorial High School by Holler Motors, Inc. of Winter Garden. From left to right are shown Mr. Malvin Rowe, Sales Manager of Holler Chevrolet, Tom Hart, Don Conner, John Odom, Bobby Chandler, Kenneth Eldridge, (in truck) Tom Russell, salesman for Holler Motors, Murray King, Fred McNeil, Billy Joe Chandler, Ken Gilliam, Larry Hudson, Dillard Alligood, Cledis Fort, Mr. W. E. Harris, former Ag. Teacher (deceased) and Mr. Robert E. King, assistant principal.

Sets Pace

(Continued from page 12)

the other agency representative of the change in project program.

Where seasonal projects are involved the boys will not be permitted to transfer

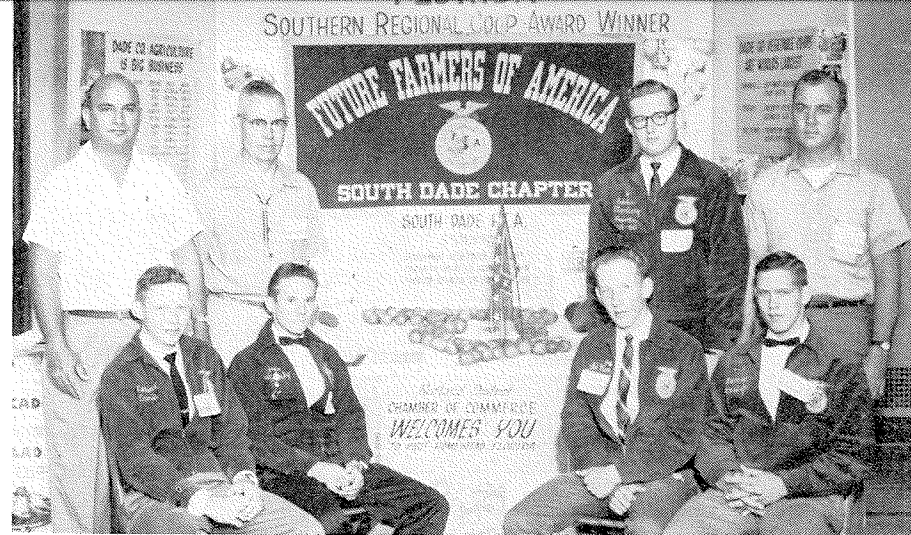
the project or show an exhibit from the project in another organization.

Ground rules for judging contest participation included: When a 4-H or FFA member participates on a state winning team or activity he is not eligible to participate again in the same activity with the other organization. This rule would apply on a state or national level only.

Further when a boy qualifies himself to participate on a state team or activity in both 4-H and FFA during the same club or chapter year, he must make a decision as to which team he chooses to participate on for that year.

The group reaffirmed that the two organizations go on record as continuing the policy of recommending to show and fair managements that they keep 4-H and FFA divisions separate.

For a check on Florida's good neighbor policy, follow the fair circuit this winter—or any place where the sponsoring agencies gather—and you'll see congenial agents and teachers cooperating as if they were members of the same educational team. This sharing of educational responsibilities is not by accident—remember it began at the administrative conference table.



South Dade Exhibit at the American Institute of Cooperation in Urbana, Illinois. Seated (L to R): Maurice Ennis, Paul Konsky, Donald King and Don Davis, Jr. Standing: Lansing Gordon, Adviser, Dr. E. K. Cake, Marketing Specialist, Extension Division, University of Florida, Eddie Starling and Adviser, Gene Herring.

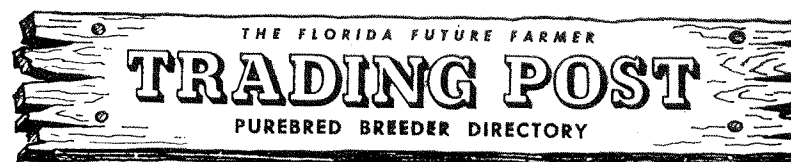
WINNING THE American Institute of Cooperation Southern Regional Award of \$500 for chapter cooperative activities this year was the South Dade Chapter at Homestead. Attending the National meeting and participating were Paul Kensky, Eddie Starling, Donald King, Maurice Ennis, Don Davis, and their Advisers, Lansing Gordon, and Gene Herring.

Each member presented a talk about "Going Into Business in America." Starling gave the chapter report for the year, which covered: 16 projects, in which chapter members spent 1303 hours of work, 952 hours of chapter coopera-

tive activities. They cooperated with 14 school, community, and civic organizations in 35 different projects. They had 183 hours of instruction, demonstrations, and field trips pertaining to education on farm cooperatives.

The members are to be congratulated on their work during the year and for their exhibit of tropical and sub-tropical fruit at the American Institute of Cooperation Convention.

The 1960 American Institute of Cooperation Convention will be held at the University of California at Berkeley, August 7-10. South Dade Chapter will not be eligible for this award next year.



ABERDEEN-ANGUS

GULFSTREAM FARM

of the Glades Sod Company

Registered
Aberdeen-Angus

FT. LAUDERDALE FLORIDA

For
REGISTERED
ABERDEEN-ANGUS

See

SUN LAKE RANCH

P. O. Box 37 Lutz, Florida

TRIPSON'S DAIRY

VERO BEACH FLORIDA

BRAHMAN

A. DUDA & SONS

Breeders of
REGISTERED BRAHMAN CATTLE

Ph. 456-W COCOA, FLA.
G. A. TUCKER, Manager
H. J. FULFORD, Herdsman

BRANGUS

BRANGUS—will
breed better beef for you

WOLFE RANCH

H. E. Wolfe, owner—St. Augustine, Fla.
Located midway between
St. Augustine & Green Cove Springs

Advertise!

Your "Official Fund Raising Calendar" is going strong. Join the hundreds of Chapters now earning money and publicizing FFA with distinction—through this top quality, attractive Calendar.

CUSTOM CAL COMPANY

P. O. Box 248, N. Side Station
Atlanta, Georgia

For Your Chapter Printing Supplies:

- Letter Heads
- Envelopes
- Judging Cards
and other
Printing

Write

BULKLEY-NEWMAN PRINTING CO.

451 W. Gaines St.
Tallahassee Florida

REAL SOUTHERN DIVISION OF
McMULLEN FOOD BANK, INC.

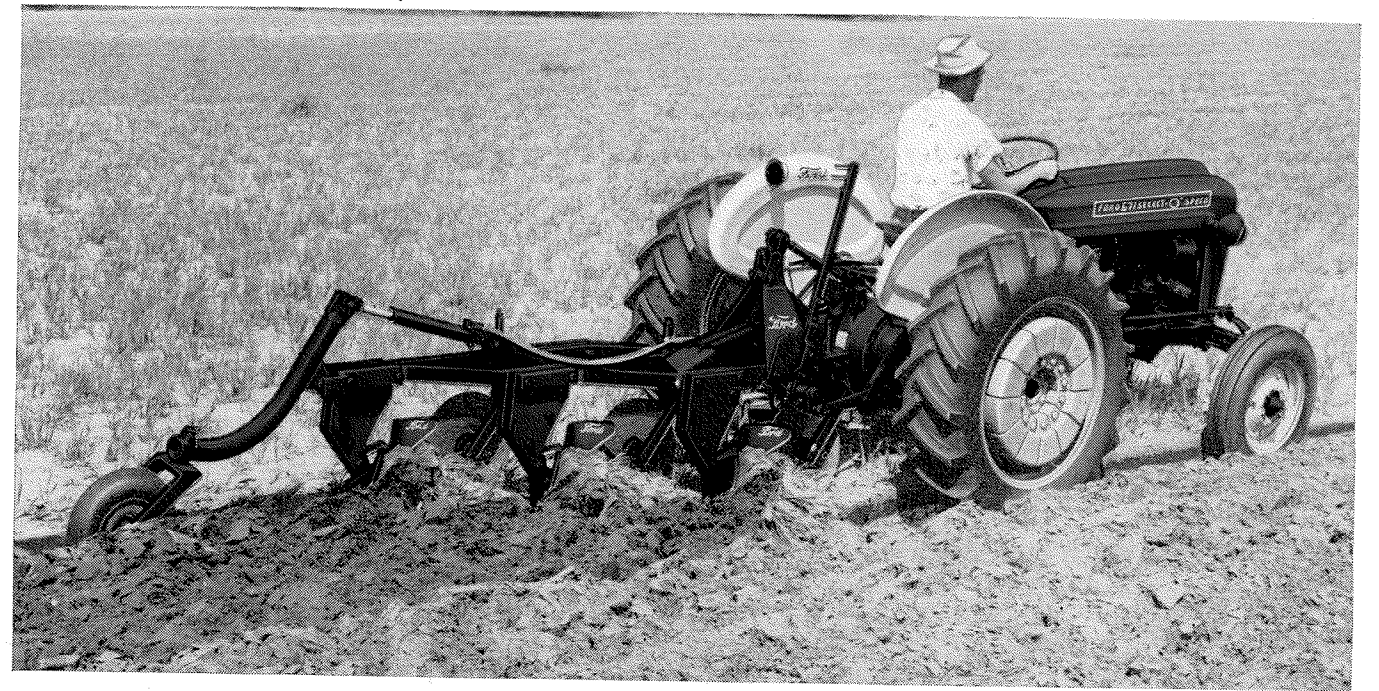
Processors
WHITE ACRE brand PEAS with SNAPS.
Live Oak, Florida

Ford Tractor Division

Brown Tractor Company

Monticello Tallahassee
Phone 253 Phone 22-947

INLAND GROVES, INC.
CLERMONT, FLA.



Now! Shift on-the-go to any gear
NEW FORD
SELECT-O-SPEED!



POWER SHIFTING...ONLY FORD HAS IT!

Avoid engine over-loads and stalls—Since you can quickly change tractor speed and power to match the job at hand, you can easily avoid over-loading the engine or stalling out.

Reduce engine wear—There's no need to lug down on tough pulls. This easy to operate Select-O-Speed lever changes to the gear ratio you want hydraulically.

Wide range of gears—10 speeds forward, plus 2 in reverse. Snap shift up or down. Save time by always moving in the fastest practical gear.

Save on fuel bills—Tractor engine can always be operated at most efficient, fuel saving speed.

Save on tires—Using proper pulling gear reduces wheel slippage...cuts tire wear.

Safe parking—Put Selector lever in "park" position and tractor can't move—whether engine is running or not. Eliminates setting brakes.

Constant mesh gears—Impossible to clash Select-O-Speed gears! They wear longer because they cannot be damaged by clashing or grinding.

Independent PTO—Engage or disengage on-the-go. Handy push-pull handle is on the dash where it belongs. Change ground speeds with Select-O-Speed while PTO stays at engine speed. It saves the cost of a separate engine on most harvesting equipment.

Always in solid gear drive—There's no fluid coupling, no torque converter, no fuel-wasting slippage. More engine power goes as pulling power. And you have positive control of tractor ground speeds at all times.

Built-in Ford quality—Designed to provide dependable, money-saving performance. Easiest shifting tractor in the world...try one and see! Get a demonstration from your nearby Ford tractor and implement dealer. Ask about liberal terms.

Don't Delay...Buy Ford Today!
SEE YOUR NEARBY FORD TRACTOR & IMPLEMENT DEALER